

**Anti-CTBP2 Antibody**  
**Rabbit polyclonal antibody to CTBP2**  
**Catalog # AP59996****Specification**

---

**Anti-CTBP2 Antibody - Product Information**

Application	WB, IF/IC, IHC
Primary Accession	<a href="#">P56545</a>
Other Accession	<a href="#">P56546</a>
Reactivity	Human, Mouse, Rat, Bovine
Host	Rabbit
Clonality	Polyclonal
Calculated MW	48945

**Anti-CTBP2 Antibody - Additional Information****Gene ID** 1488**Other Names**

C-terminal-binding protein 2; CtBP2

**Target/Specificity**

Recognizes endogenous levels of CTBP2 protein.

**Dilution**

WB~~WB (1/500 - 1/1000), IH (1/100 - 1/200), IF/IC (1/100 - 1/500)

IF/IC~~N/A

IHC~~1:100~500

**Format**

Liquid in 0.42% Potassium phosphate, 0.87% Sodium chloride, pH 7.3, 30% glycerol, and 0.09% (W/V) sodium azide.

**Storage**

Store at -20 °C. Stable for 12 months from date of receipt

**Anti-CTBP2 Antibody - Protein Information****Name** CTBP2**Function**

Corepressor targeting diverse transcription regulators. Functions in brown adipose tissue (BAT) differentiation (By similarity).

**Cellular Location**

Nucleus. Synapse.

**Tissue Location**

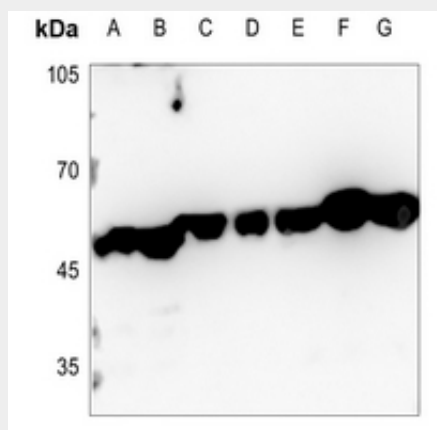
Ubiquitous. Highest levels in heart, skeletal muscle, and pancreas

### Anti-CTBP2 Antibody - Protocols

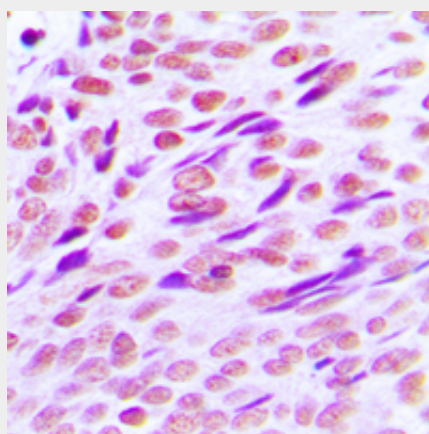
Provided below are standard protocols that you may find useful for product applications.

- [Western Blot](#)
- [Blocking Peptides](#)
- [Dot Blot](#)
- [Immunohistochemistry](#)
- [Immunofluorescence](#)
- [Immunoprecipitation](#)
- [Flow Cytometry](#)
- [Cell Culture](#)

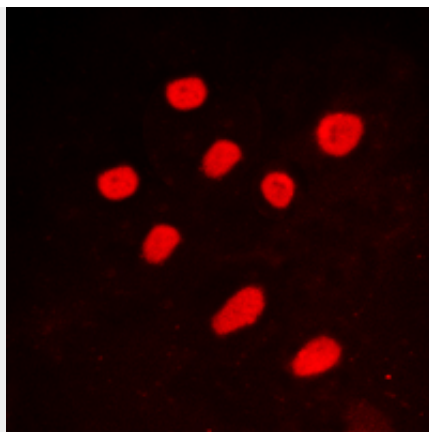
### Anti-CTBP2 Antibody - Images



Western blot analysis of CTBP2 expression in HEK293T (A), MCF7 (B), U2OS (C), mouse lung (D), mouse testis (E), rat lung (F), rat testis (G) whole cell lysates.



Immunohistochemical analysis of CTBP2 staining in human breast cancer formalin fixed paraffin embedded tissue section. The section was pre-treated using heat mediated antigen retrieval with sodium citrate buffer (pH 6.0). The section was then incubated with the antibody at room temperature and detected using an HRP conjugated compact polymer system. DAB was used as the chromogen. The section was then counterstained with haematoxylin and mounted with DPX.



Immunofluorescent analysis of CTBP2 staining in A549 cells. Formalin-fixed cells were permeabilized with 0.1% Triton X-100 in TBS for 5-10 minutes and blocked with 3% BSA-PBS for 30 minutes at room temperature. Cells were probed with the primary antibody in 3% BSA-PBS and incubated overnight at 4 °C in a humidified chamber. Cells were washed with PBST and incubated with a DyLight 594-conjugated secondary antibody (red) in PBS at room temperature in the dark.

**Anti-CTBP2 Antibody - Background**

KLH-conjugated synthetic peptide encompassing a sequence within the C-term region of human CTBP2. The exact sequence is proprietary.